

The logo for DUDEK, featuring the word "DUDEK" in white, bold, sans-serif capital letters. It is positioned within a blue and green abstract shape that resembles a stylized wave or a modern logo element.

DUDEK

A wide-angle landscape photograph of Montecito, California. The foreground shows a lush green golf course with scattered trees. In the middle ground, there are residential houses and more trees. The background features a range of dark, forested mountains under a bright blue sky with large, white, fluffy clouds.

Montecito Groundwater Basin

Groundwater Management and SGMA

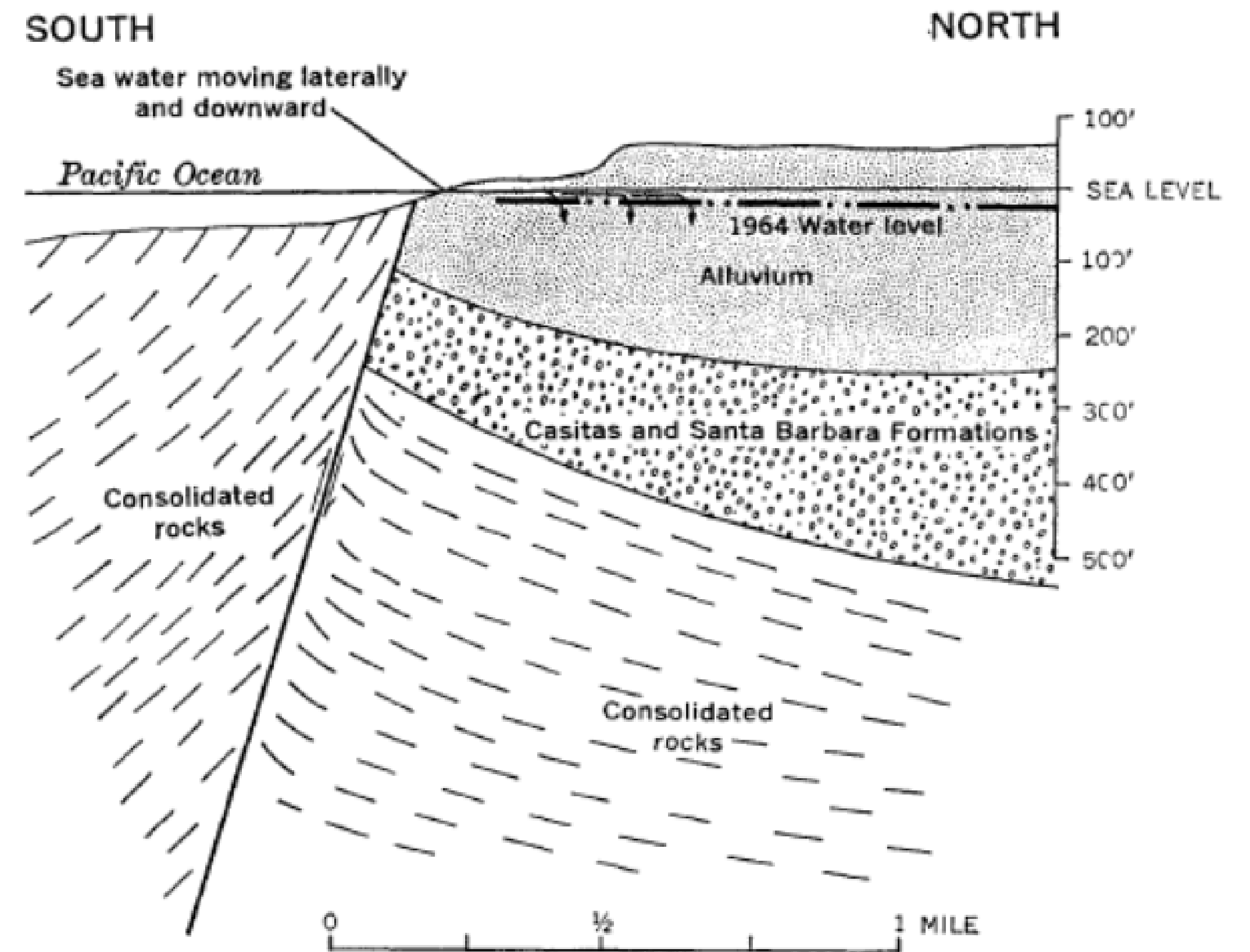
MONTECITO GROUNDWATER BASIN GSA

April 29, 2019

Historical Study and Management of Groundwater

Historical Groundwater Studies included USGS and others.

USGS
Pueblo
MWD
GTC
Loaiciga
SB County
Others

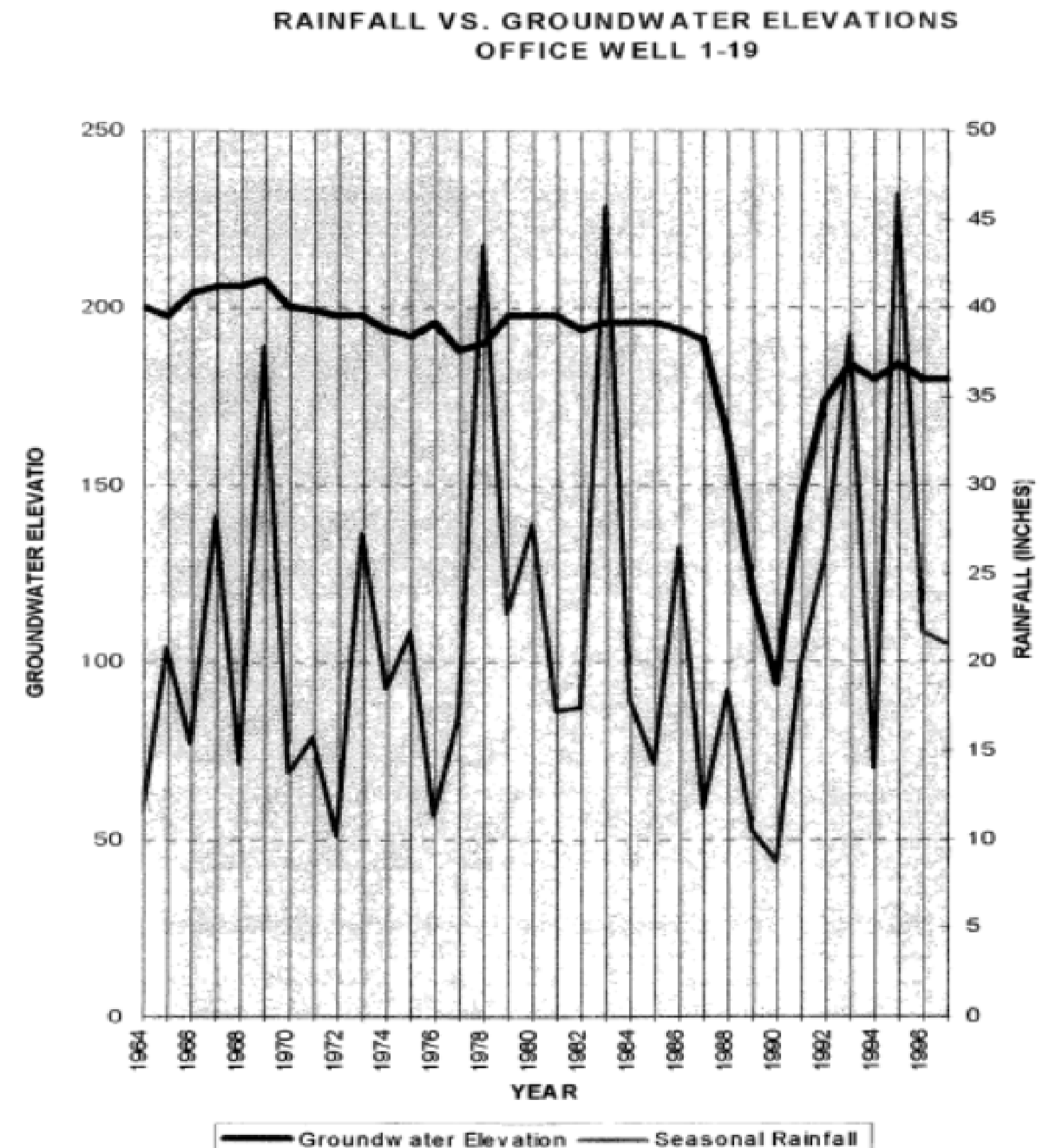


From USGS Ground Water Supply Paper 1859-A

Historical Study, and Management of Groundwater

**1998 Groundwater
Management Plan
Prepared by Montecito
Water District**

AB 3030 Compliant



Sustainable Groundwater Management Act (SGMA)

SGMA provides for a legal framework to reasonably regulate production of groundwater in California for the first time in State history.

It requires the sustainable management of all of California's medium or high priority groundwater Basins.



Senate Bill 1168
(Pavley)



Assembly Bill 1739
(Dickenson)



Senate Bill 1319
(Pavley)



Took Affect
September 2014

Sustainable Groundwater Management Act (SGMA)

Water Code Section 10733.2

SGMA guidelines developed and implemented by DWR. SWRCB has the authority to intervene if not implemented by the local entities.

Required in all basins designated as high or medium priority

SGMA related processes include Basin Boundary Modification, Basin Prioritization, Groundwater Sustainability Agency (GSA) formation
Groundwater Sustainability Plan (GSP) preparation and implementation

Sustainable Groundwater Management Act (SGMA)

SGMA is implemented by Groundwater Sustainability Agencies (GSAs) made up of local agencies with water supply, water management and/or land use authority within a basin.

GSAs are responsible for developing and implementing Groundwater Sustainability Plans (GSPs) to meet sustainability goals within 20 years

GSAs are empowered to utilize a number of management tools to achieve sustainability, i.e. register and meter wells, require extraction reporting for individual wells, impose limits on extractions, assess fees for development of GSP.

SGMA is intended to prevent “undesirable results”

Montecito Groundwater Basin SGMA Implementation to Date

Basin Boundary Modification

- Done to simplify basin management
- Ratified by DWR February 2019

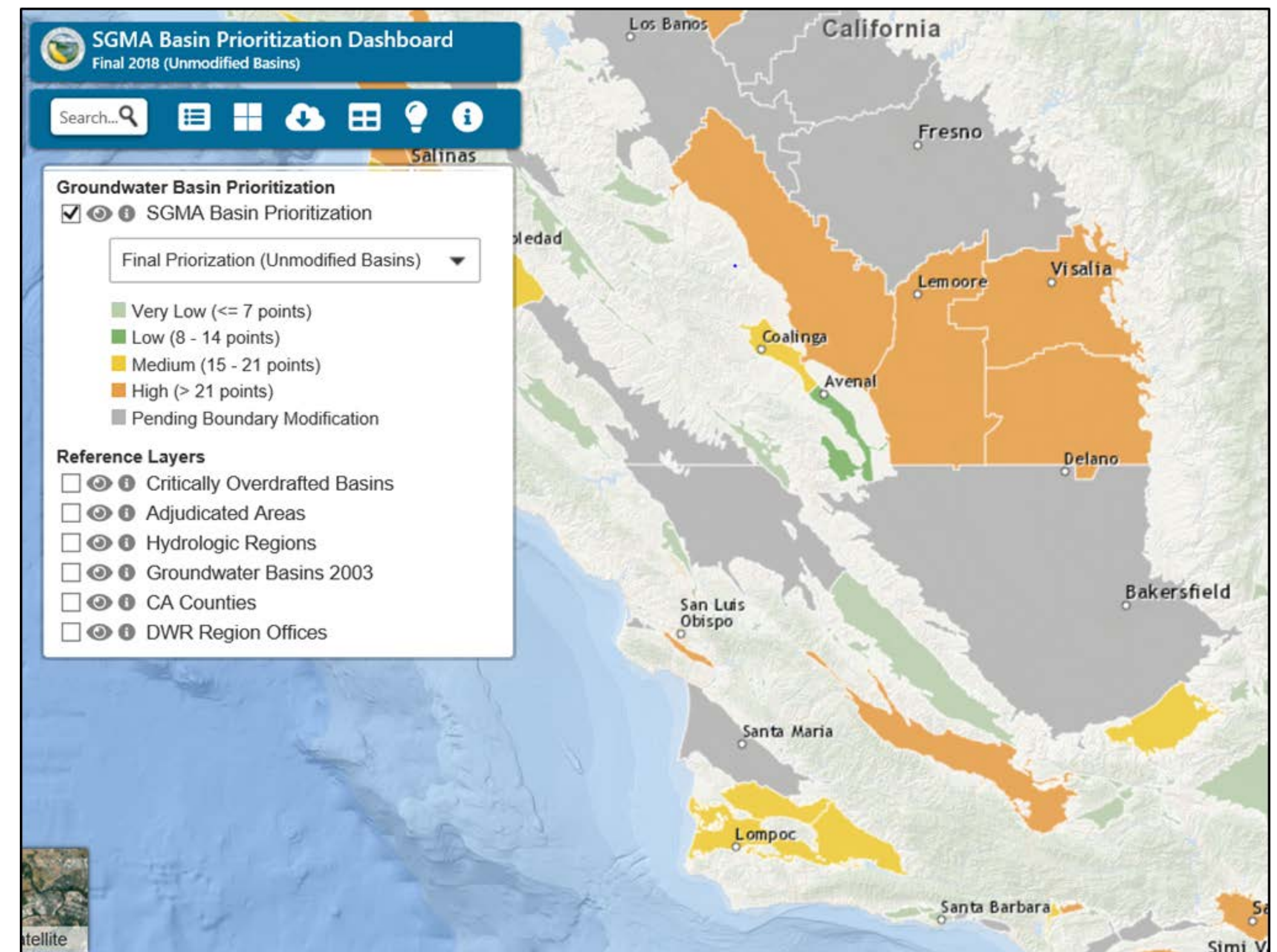


Montecito Groundwater Basin SGMA Implementation to Date

MWD voluntary compliance with State basin prioritization program. “Low” priority prior to SGMA

Basin was reprioritized as “medium” priority (to be finalized in Spring 2019). Requires SGMA compliance.

Eligibility for funding and technical assistance



Montecito Groundwater Basin SGMA Implementation to Date

Groundwater Sustainability Agency Formation

- Multiple public meetings and workshops
- Extensive public outreach
- Collaboration with adjacent basins and stakeholders (Santa Barbara and Carpinteria)
- Notice of Intent to become the GSA provided per DWR regulations
- Public Hearing held on July 24, 2018 and Resolution 2169 was adopted
- 90-day public review period
- **Declared Exclusive GSA for the Montecito Groundwater Basin – November 28, 2018**

Groundwater Sustainability Plan (GSP) Preparation

As a medium Priority Basin, the Montecito Groundwater Basin is required by DWR to prepare a Groundwater Sustainability Plan.

Must achieve “sustainability” within 20 years

Sustainability is defined as the absence of undesirable results including:

- Lowering of groundwater levels
- Loss of storage
- Disconnection of surface and groundwater
- Land subsidence
- Degradation of water quality
- Sea water intrusion

The Montecito GSP must be adopted by the GSA Board and approved by DWR

Groundwater Sustainability Plan (GSP) Scope of Work

Primary Components of the Montecito Basin GSP (Partial List):

- Public and Stakeholder Engagement
- Data Management System
- Hydrogeologic Conceptual Model
- Water Budget and Sustainable Yield
- Sustainable Management Criteria
- Data Gaps Assessment and Monitoring Program
- Projects and Management Action



Groundwater Sustainability Plan (GSP) Scope of Work

GSP must include technical information including usable storage, safe yield, water use and recharge, connectivity of storage units, basin margin conditions, and sea water intrusion.

GSP will address historical and projected water demands and supply reliability, location of and extraction allocation for wells, projects and management actions to enhance and ensure the longevity of the Basin resources, measurable objectives and milestones toward sustainability, and a monitoring and management plan

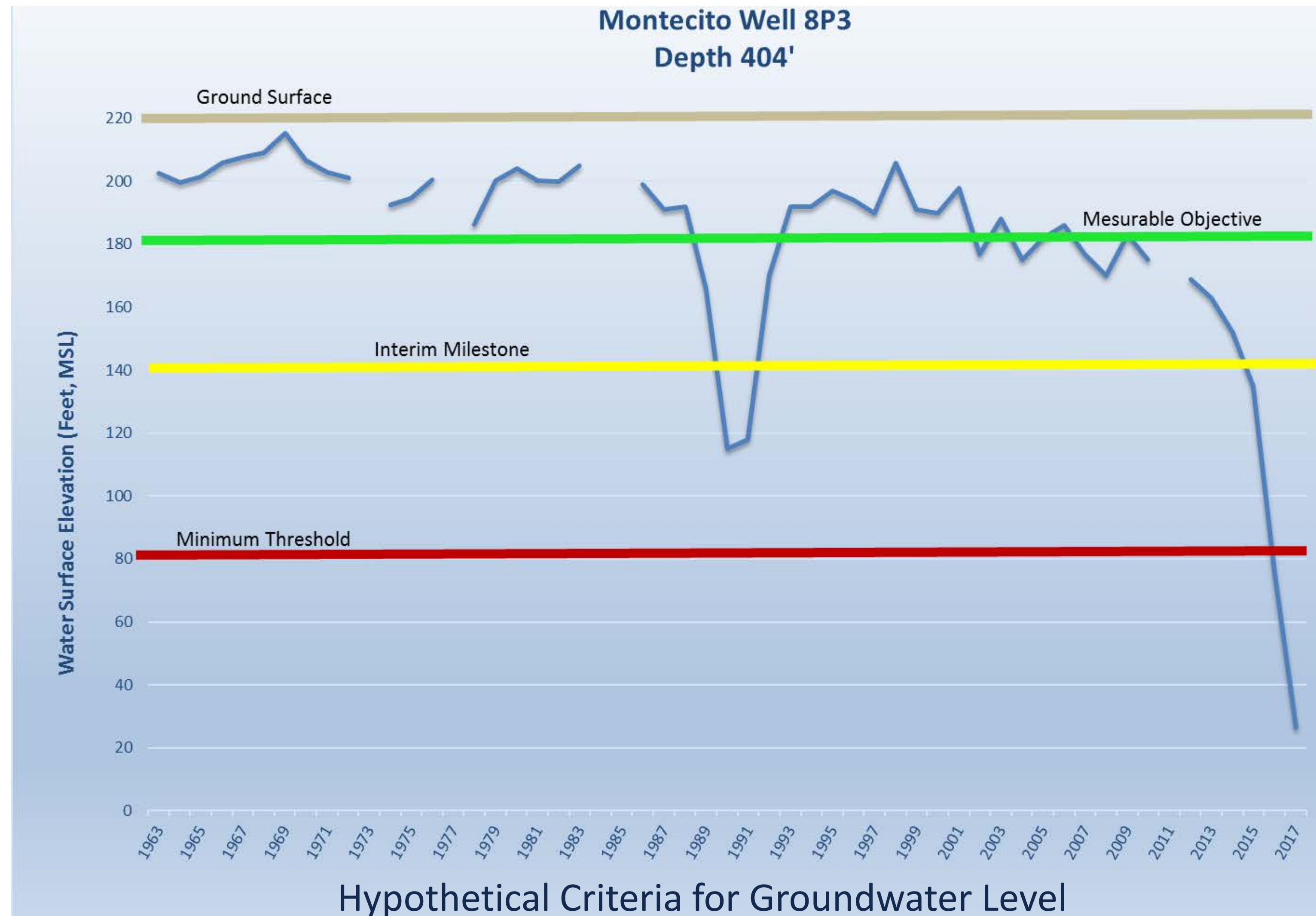
Groundwater Sustainability Plan (GSP) Scope of Work

Sustainable Management Criteria

The sustainable management criteria is the locally determined definition of sustainability along with the metrics established for obtaining that goal.

Required Components:

- Sustainability Goal
- Measurable Objectives
- Minimum Thresholds
- Interim Milestones



Groundwater Sustainability Plan (GSP) Scope of Work

Projects and Management Actions - Methods by which sustainability is achieved

Examples of Projects and Management Actions

- Importation of water
- Use of recycled water
- Allocation of groundwater extraction
- Water conservation measures
- Implementation of a water market

Nexus with other Montecito Projects and Programs

- Desalination water
- Recycled Water Feasibility Study
- Aquifer Storage and Recovery



Groundwater Sustainability Plan (GSP) Preparation

Initial Steps

Project kickoff meeting

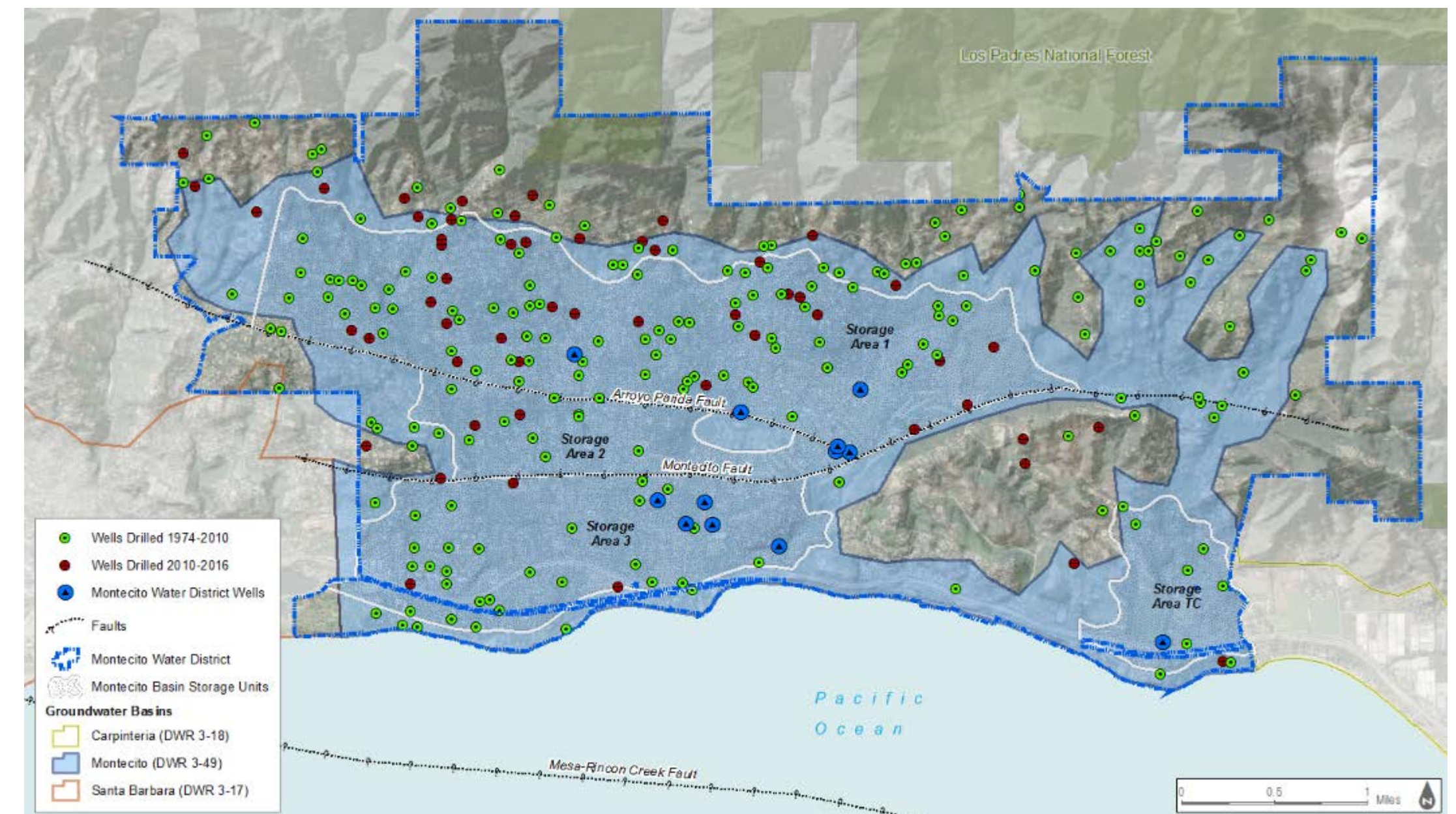
Preparation for public outreach

Funding analysis kickoff

Data acquisition

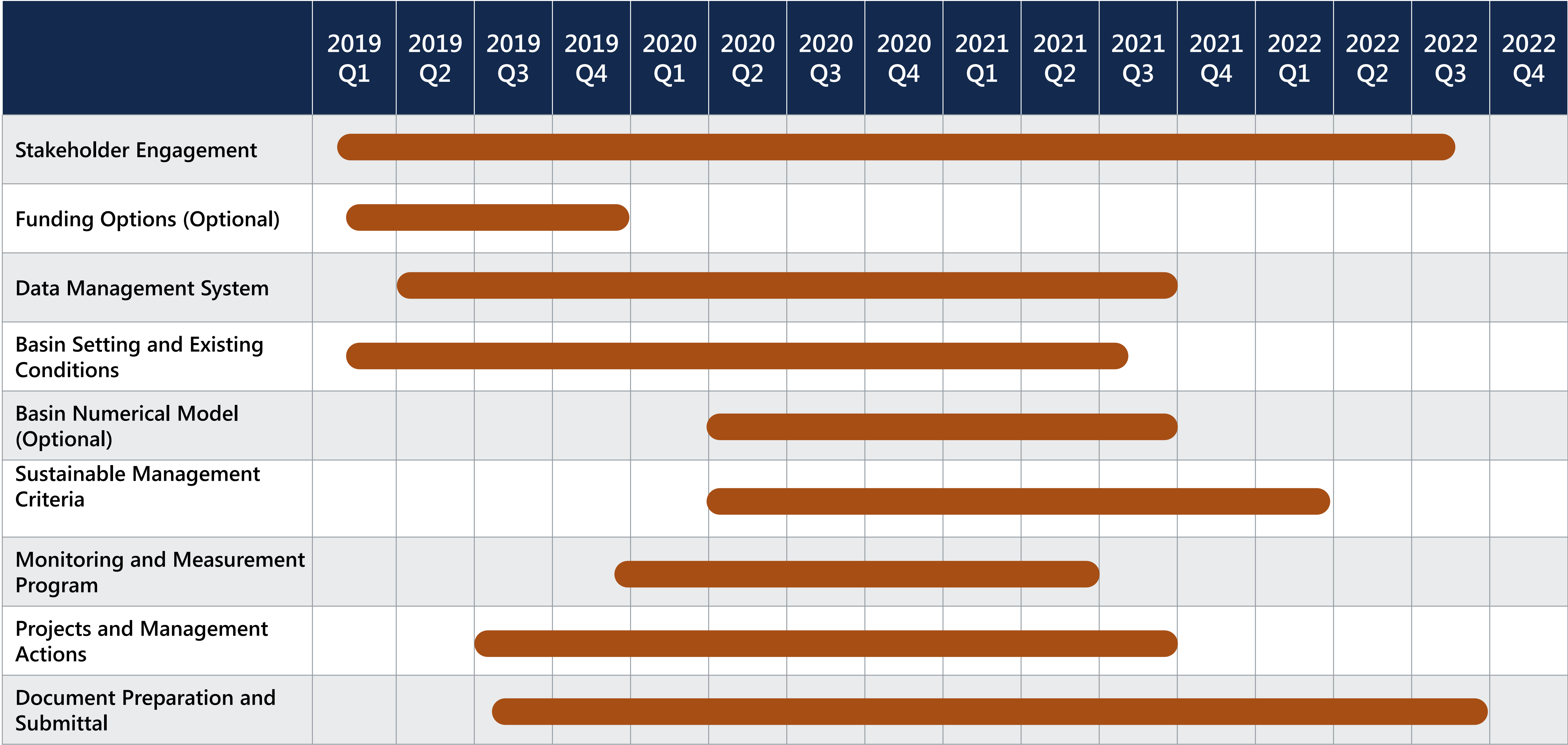
Data management system design and population

Coordination with Groundwater Augmentation Feasibility Study



RAFTELIS

Montecito GSP Preparation Schedule



Groundwater Sustainability Plan Implementation

Projects and Management Actions

Fill Data Gaps (monitoring and studies)

Track progress toward sustainability goals

Submit annual and periodic reports to DWR

GSP may be adjusted in response to additional information gained with implementation



A wide-angle photograph of a beach at sunset. The sky is a deep blue at the top, transitioning through orange and red to a dark horizon. A thin crescent moon is visible in the upper left. The ocean is calm with small waves, and the wet sand in the foreground reflects the vibrant colors of the sunset. Several sailboats are visible on the horizon. The text "Thank You" is centered in a large, white, sans-serif font.

Thank You